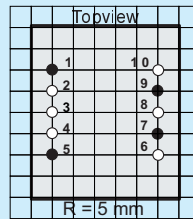
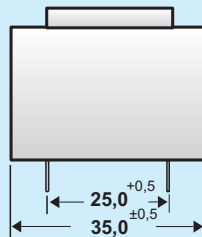
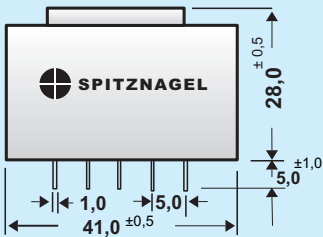


Schaltnetzteil SPN 005.....

Nennleistung **5 W**

- AC/DC-Printmodul
- Universaleingang
85 - 265 VAC(47 - 440 Hz) oder 115 - 375 VDC
- Wirkungsgrad bis 80 %
- Leerlaufverluste <160 mW
- konform IEC62301 und EuP 2005/32/EC
- Kurzschluss-, Überlast-, Temperaturschutz
- Arbeits-/Lagertemperatur: -25°C bis +85°C
- Arbeits-/Lagerfeuchtigkeit: 95% o. Kond.

- AC/DC-module for PCB-mounting
- Universal input
85 - 265 VAC(47 - 440 Hz) oder 115 - 375 VDC
- Efficiency up to 80 %
- No load power consumption <160 mW
- compliant IEC62301 and EuP 2005/32/EC
- Shortcircuit-, overload-, temperature-protection
- Working-/Storage Temperature: -25°C bis +85°C
- Working-/Storage- Humidity: 95% non condensing



Pin Discription

- 1 Input AC (L) / DC
- 5 Input AC (N) / DC
- 7 Output V-
- 9 Output V+

Part No:		SPN 00503	SPN 00505	SPN 00509	SPN 00512	SPN 00515	SPN 00524
Output	Dc Voltage	3,3 V	5 V	9 V	12 V	15 V	24 V
	Current Range	0-1250 mA	0-1000 mA	0-550 mA	0-450 mA	0-340 mA	0-210 mA
	Peak Current	1800 mA	1600 mA	800 mA	600 mA	500 mA	250 mA
	Rated Power	4,1 W	5,0 W	5,0 W	5,0 W	5,0 W	5,0 W
	Ripple & Noise	90 mV	100 mV	90 mV	70 mV	120 mV	70 mV
	Voltage Tolerance	+/- 2%					
	Load Regulation	+/- 1%					
	Setup, Rise Time	3,7 ms	6 ms	11 ms	19 ms	19 ms	30 ms
	Hold Up Time	6,7 ms	9 ms	17 ms	29 ms	32 ms	47 ms
Input	Voltage Range	85 - 265 VAC / 115 - 375 VDC					
	Frequency	47 - 440 Hz					
	Efficiency (Typ)	69%	73%	77%	79%	77%	78%
	Ac Current (Typ)	<80 mA / 230V			<120 mA / 115 V		
	No Load Power	<120 mW	<230 mW	<160 mW	<160 mW	<170 mW	<190 mW
	Inrush Current (Typ)	COLD START <20 A / 230 VAC					
Protection	Over Current	<2,4 A	<1,8 A	<1,0 A	<0,7 A	<0,6 A	<0,3 A
	Over Temperature	thermal shutdown 142°C					
Environment	Temperature	working and storage -25°C to +85°C					
	Humidity	working and storage 95% rel humidity without condensation					
Safety & Emc	Safety Standards	EN60950, EN60335, EN61558-2-16					
	Withstand Voltage	Input/Output 4 kVAC					
	Insulation Res.	Input/Output 100 mOhm /500 VDC					
	Emc / Emi	EN55014-1, EN55014-2, EN55022 Class B (CISPR22)					
	Harmonic Current	EN61000-3-2,3					
	Ems Immunity	EN61000-4-2,3,4,5,6,8,11					
Note	1. Parameters not specially mentioned are measured at 230 VAC input, rated load and 25°C of ambient temperature. 2. The SPN can not deliver permanent over current, it would cause damages to the SPN. 3. Ripple and noice are mesured with 1uF electrolytic and 0,1 uF ceramic capacitor.						